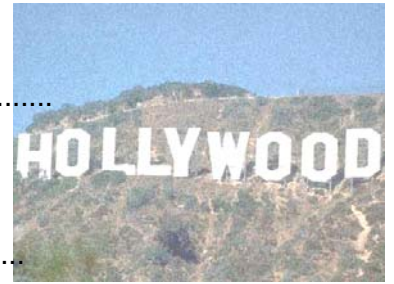


18.1. TRUE or FALSE? Est-ce vrai?

Hollywood is in California. ... *true*. – Hollywood is famous for its university.
 A dog can climb trees. - A cat can see in the dark.
 A daffodil is a flower. - A daffodil is red or black.
 Napoleon was a Spanish monk. – Napoleon was a Roman Catholic.
 My nephew is the daughter of my sister. – My sister is my nephew's aunt.
 Turkey is in Africa. – The highest mountain of Africa is Kilimanjaro.
 Heavy rains cause earthquakes. – There are often earthquakes in Switzerland.
 Washington was the first President of the United States. – He was elected in 1899.
 The first steam engine was built by Edison. – Edison was a famous American inventor.
 The capital of Germany is Bonn. – Germany is divided in two parts.
 When it's winter in Australia, it's summer time in Europe. – France is larger than Australia.



18.2. THE FIRST TELEPHONES IN ARABIA. Ecrivez ces mots dans les espaces correspondants.

things ~~line~~ listened holy over leaders devil priests convinced then If through part

When the first telephone *line*.... was installed in Arabia, the religious.....
 protested that such were the work of the King Ibn
 Saud..... to their complaints, and said: " the telephone is
 really a work of the devil, then the words of the Koran will not go through it. But
 if the holy words go it, then it is not a work of the devil. We shall appoint
 two....., one in the Palace and one at the telephone exchange, and they are in turn to
 read of the Koran the telephone." By this test the religious leaders
 were.....



18.3. PARTS OF THE BODY. Insère les mots dans le bon espace:

lips - ~~ears~~ – teeth – hands – legs – arms – nose – legs – fist - eyes – brains –

You hear with your ... *ears*..... . You chew food with your
 You think with your You kiss your friend with your
 You smell with your You see with your You clap (applaudir) with your
 To run fast you use your You point at something with your You hug
 (embrasser) someone with your To hit someone hard you use your.....

